

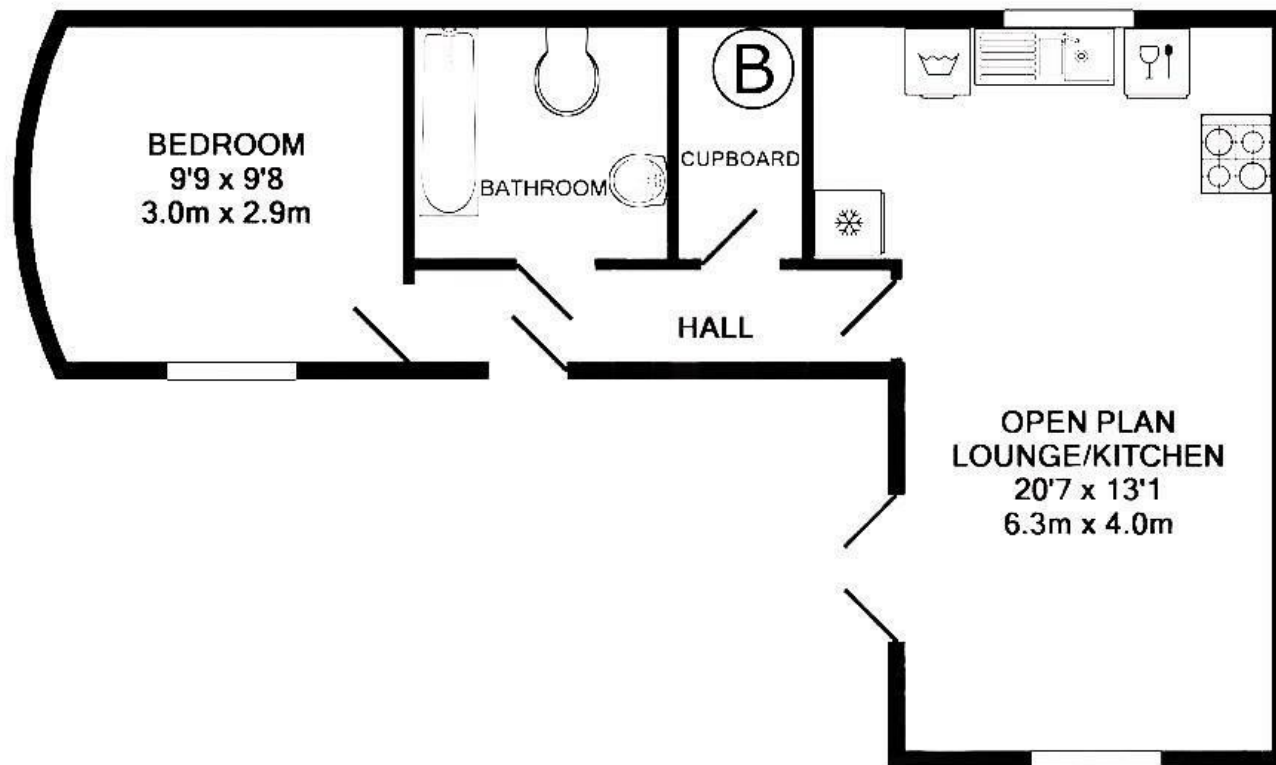


1 Bed  
Bungalow -  
Detached  
located in

Offers in excess of £300,000



CHRISTOPHER ANTHONY



TOTAL APPROX. FLOOR AREA 453 SQ.FT. (42.1 SQ.M.)

## DIRECTIONS

## CONTACT

9 Evesham Walk  
Basingstoke  
Hampshire  
RG24 9BJ

E: [Sales@christopher-anthony.co.uk](mailto:Sales@christopher-anthony.co.uk)  
T: 0118 995 2771  
<https://christopher-anthony.co.uk/>

Energy Efficiency Rating		
	Current	Potential
Very energy efficient - lower running costs		
(92 plus) <b>A</b>		90
(81-91) <b>B</b>		
(69-80) <b>C</b>	72	
(55-68) <b>D</b>		
(39-54) <b>E</b>		
(21-38) <b>F</b>		
(1-20) <b>G</b>		
Not energy efficient - higher running costs		
England & Wales		
EU Directive 2002/91/EC		



CHRISTOPHER ANTHONY